

SCMD-MORO/MORC



Miniature Digital Relay Output Modules

Description

The SCMD digital relay output modules are used for switching AC and DC loads such as relays, solenoids, motor starters, or indicator lamps. All models provide up to 1000Vrms of optical isolation between the field device and the control logic. Functionality is denoted by case color—relay modules are brown.

Six backpanels are available for mounting SCMD-M relay output modules. See “Accessories” section.

► Features

- UL Listed, CSA Certified, CE Compliant
- Resistive Load Only
- Max On-state Current 1A, 30WDC, 62.5VA
- Max Turn-on Time 2ms
- Max Turn-off Time 1ms
- 1000Vrms Isolation
- Plug into Backpanels for Miniature or Full-Sized Modules
- Industry Standard Pinout and Footprint
- Operating Temperature -30°C to +80°C

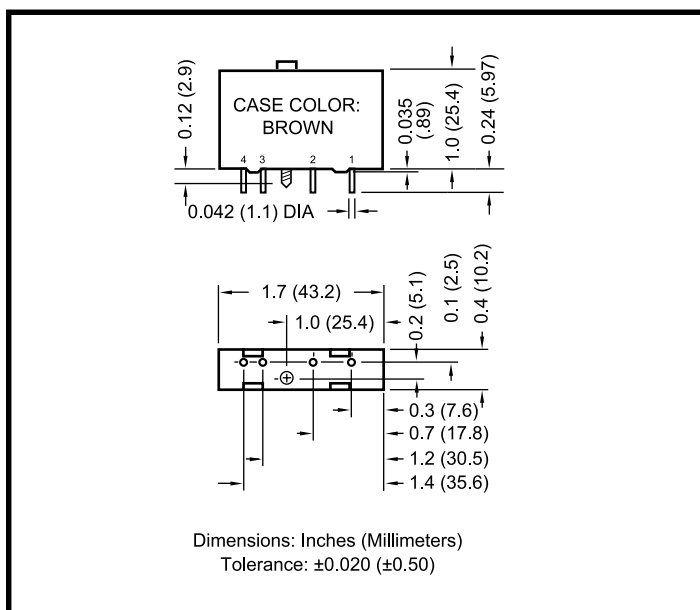


Figure 1: SCMD-MORO/MORC Physical Dimensions

Ordering Information

Model	Output Range	Supply Voltage
SCMD-MORO5	100/125 VDC/Vrms	5V
SCMD-MORC5	100/125 VDC/Vrms	5V
SCMD-MORO24	100/125 VDC/Vrms	24V
SCMD-MORC24	100/125 VDC/Vrms	24V

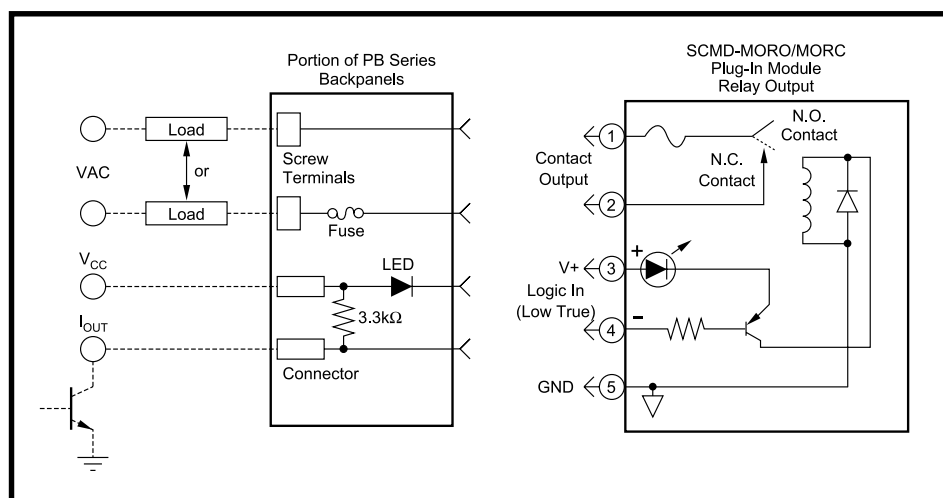


Figure 2: SCMD-MORO/MORC Circuit Diagrams